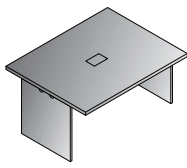
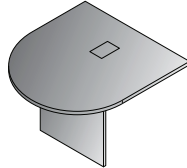


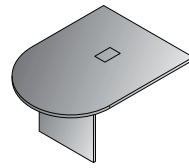
EXP-228-xxx
48"x48"
Table Component
47.2"x47.2"x29.1"
CU:5 WT:123.5
List Price: **\$750**



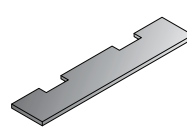
EXP-229-xxx
60"x48"
Table Component
59.1"x47.2"x29.1"
CU:5.3 WT:143.3
List Price: **\$850**



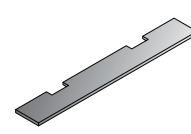
EXP-230-xxx
48"x48" Bullet Top
Component
47.2"x47.2"x29.1"
CU:4.3 WT:92.6
List Price: **\$700**



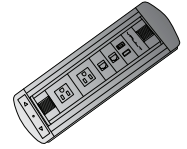
EXP-231-xxx
60"x48" Bullet Top
Component
59.1"x47.2"x29.1"
CU:6.6 WT:110.2
List Price: **\$800**



EXP-232-xxx
Stretcher for NAP230
2 qty.
55.1"x11.4"x1"
CU:0.7 WT:19.8
List Price: **\$145**



EXP-233-xxx
Stretcher for NAP231
2 qty.
78.7"x11.4"x1"
CU:0.9 WT:26.5
List Price: **\$180**



EXP-POW1
Power/Data/
HDMI Unit
5.25"x3"x1.25"
CU:0.4 WT:5.0
List Price: **\$950**



EXPCHY-TYP12R
Racetrack Table with 518317HA-EC3 chairs

EXP-POW1
Power Data/HDMI Unit



Configuration Guide



30' Racetrack Table
EXPxxx-TYP30R

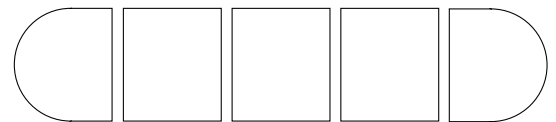
\$5,000
34.5 cu.ft. 793.7 lbs.
Consists of:
(4) qty. EXP-229
(2) qty. EXP-231

28' Racetrack Table
EXPxxx-TYP28R

\$4,800
33.8 cu.ft. 754.0 lbs.
Consists of:
(2) qty. EXP-228
(2) qty. EXP-229
(2) qty. EXP-231

26' Racetrack Table
EXPxxx-TYP26R

\$4,600
33.1 cu.ft. 714.3 lbs.
Consists of:
(4) qty. EXP-228
(2) qty. EXP-231



24' Racetrack Table
EXPxxx-TYP24R

\$4,050
28.8 cu.ft. 630.5 lbs.
Consists of:
(1) qty. EXP-228
(2) qty. EXP-229
(2) qty. EXP-231

22' Racetrack Table
EXPxxx-TYP22R

\$3,850
28.1 cu.ft. 590.8 lbs.
Consists of:
(3) qty. EXP-228
(2) qty. EXP-231



20' Racetrack Table
EXPxxx-TYP20R

\$3,300
23.9 cu.ft. 507.1 lbs.
Consists of:
(2) qty. EXP-229
(2) qty. EXP-231

18' Racetrack Table
EXPxxx-TYP18R

\$3,100
19.2 cu.ft. 471.8 lbs.
Consists of:
(2) qty. EXP-229
(2) qty. EXP-230

16' Racetrack Table
EXPxxx-TYP16R

\$2,900
18.2 cu.ft. 343.9 lbs.
Consists of:
(2) qty. EXP-228
(2) qty. EXP-230

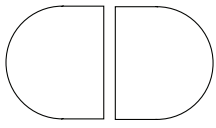


14' Racetrack Table
EXPxxx-TYP14R

\$2,350
18.2 cu.ft. 343.9 lbs.
Consists of:
(1) qty. EXP-228
(2) qty. EXP-231

12' Racetrack Table
EXPxxx-TYP12R

\$2,150
13.5 cu.ft. 308.6 lbs.
Consists of:
(1) qty. EXP-228
(2) qty. EXP-230



10' Racetrack Table
EXPxxx-TYP10R

\$1,780
14.2 cu.ft. 246.9 lbs.
Consists of:
(2) qty. EXP-231
(1) qty. EXP-233

8' Racetrack Table
EXPxxx-TYP8R

\$1,545
9.3 cu.ft. 205.0 lbs.
Consists of:
(2) qty. EXP-230
(1) qty. EXP-232

Finish Key

CHY - Cherry
ESP - Espresso

MAH - Mahogany
SGW - Slate Grey



EXPESP-TYP12R
Racetrack Table with 13-V88N1WA chairs



LWS362448-URB

Finish Key



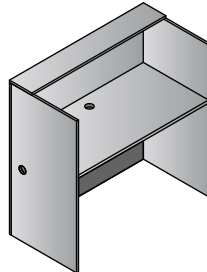
CHY - Cherry



ESP - Espresso

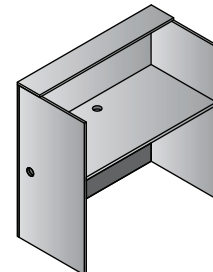


URB - Urban Walnut



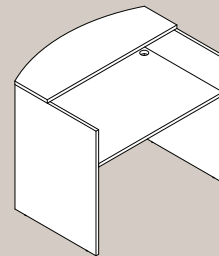
LWS362448-xxx
Laminate Workstation
36"x24"x48"
CU: 4.6 WT: 99.2
List Price: \$585

Available in:
ESP Espresso,
URB Urban Walnut



LWS482448-xxx
Laminate Workstation
48"x24"x48"
CU: 5.8 WT: 116.6
List Price: \$615

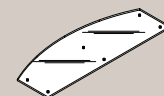
Available in:
CHY Cherry,
ESP Espresso,
URB Urban Walnut



new

NAP-121-xxx
48" Reception Desk Shell
48"x32"x42"
CU: 6.4 WT: 164
List Price: \$745

Available in:
ESP Espresso
SGW Slate Grey
WHT White



NAP-126
48"W Glass Top
*Fits NAP121ESP
48"x17.5"x48"
CU: 1.4 WT: 44
List Price: \$430