



## Boardroom Tables with genuine wood veneer and cherry finish.

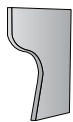
**SON-103** 3' Top 36W x 27D  
Wt: 49 Cu: 3.03 **List: \$630**



**SON-106** 6' Top 72W x 27D  
Wt: 97 Cu: 1.86 **List: \$1400**



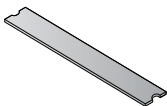
**SON-116-2** Half-Round Table Ends  
(Set of 2) 63W x 31D  
Wt: 158 Cu: 7.43 **List: \$1910**



**SON-102-2** Legs (Set of 2)  
Wt: 54.0 Cu: 1.64 **List: \$630**



**COVER PANELS** Black Faux Leather  
**CP1** Cover Panels for Half-Round Ends  
(Set of 2)  
Wt: 2 Cu: 0.05 **List: \$40**



**CP3** 3' Wide Cover Panel  
Wt: 6 Cu: 0.21 **List: \$80**

**CP6** 6' Wide Cover Panel  
Wt: 11 Cu: 0.42 **List: \$190**

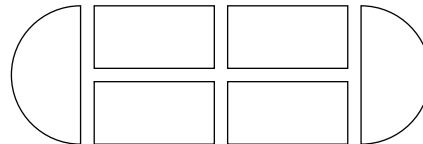


**17' Table**  
**List Price: \$10,030**  
765.6 lb. 31.5 cu ft

Consists of:  
**(4) SON-106**  
6' Top 72W x 27D

**(4) SON-102-2**  
Legs (Set of 2)

**(1) SON-116-2**  
Half-Round Table Ends  
(Set of 2) 63W x 31D



**18' Table**  
**List Price: \$10,380**  
818 lb. 34.03 cu ft

Consists of:  
**(2) SON-106**  
6' Top 72W x 27D  
**(4) SON-103**  
3' Top 36W x 27D  
**(5) SON-102-2**  
Legs (Set of 2)

**(1) SON-116-2**  
Half-Round Table Ends  
(Set of 2) 63W x 31D

**20' Table**  
**List Price: \$11,920**  
914 lb. 39.13 cu ft

Consists of:  
**(4) SON-106**  
6' Top 72W x 27D  
**(2) SON-103**  
3' Top 36W x 27D  
**(5) SON-102-2**  
Legs (Set of 2)

**(1) SON-116-2**  
Half-Round Table Ends  
(Set of 2) 63W x 31D

**23' Table**  
**List Price: \$13,460**  
1014.2 lb. 41.6 cu ft

Consists of:  
**(6) SON-106**  
6' Top 72W x 27D  
**(5) SON-102-2**  
Legs (Set of 2)

**(1) SON-116-2**  
Half-Round Table Ends  
(Set of 2) 63W x 31D



**29' Table**  
**List Price: \$16,890**  
1262.8 lb. 51.7 cu ft

Consists of:  
**(8) SON-106**  
6' Top 72W x 27D

**(6) SON-102-2**  
Legs (Set of 2)

**(1) SON-116-2**  
Half-Round  
Table Ends  
(Set of 2) 63W x 31D

