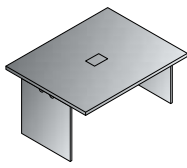
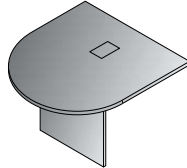


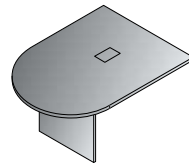
EXP-228-xxx
48"x48"
Table Component
47.2"x47.2"x29.1"
CU:5.04 WT:123
List Price: **\$800**



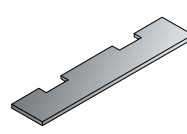
EXP-229-xxx
60"x48"
Table Component
59.1"x47.2"x29.1"
CU:5.39 WT:143
List Price: **\$900**



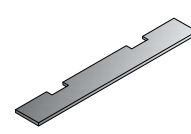
EXP-230-xxx
48"x48" Bullet Top
Component
47.2"x47.2"x29.1"
CU:4.34 WT:93
List Price: **\$775**



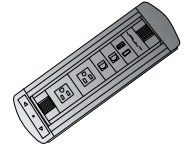
EXP-231-xxx
60"x48" Bullet Top
Component
59.1"x47.2"x29.1"
CU:5.39 WT:110
List Price: **\$850**



EXP-232-xxx
Stretcher for EXP230
2 qty.
55.1"x11.4"x1"
CU:0.48 WT:20
List Price: **\$160**



EXP-233-xxx
Stretcher for EXP231
2 qty.
78.7"x11.4"x1"
CU:0.92 WT:26
List Price: **\$205**



EXP-POW1
Power/Data/
HDMI Unit
5.25"x3"x1.25"
CU:0.4 WT:5.0
List Price: **\$895**



EXPCHY-TYP12R
Racetrack Table

EXP-POW1
Power Data/HDMI Unit

Configuration Guide



30' Racetrack Table

EXPxxx-TYP30R

\$5,300

34.5 cu.ft. 793.7 lbs.

Consists of:

- (4) qty. EXP-229
- (2) qty. EXP-231

28' Racetrack Table

EXPxxx-TYP28R

\$5,100

33.8 cu.ft. 754.0 lbs.

Consists of:

- (2) qty. EXP-228
- (2) qty. EXP-229
- (2) qty. EXP-231

26' Racetrack Table

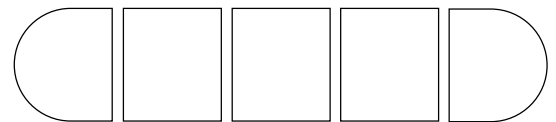
EXPxxx-TYP26R

\$4,900

33.1 cu.ft. 714.3 lbs.

Consists of:

- (4) qty. EXP-228
- (2) qty. EXP-231



24' Racetrack Table

EXPxxx-TYP24R

\$4,300

28.8 cu.ft. 630.5 lbs.

Consists of:

- (1) qty. EXP-228
- (2) qty. EXP-229
- (2) qty. EXP-231

22' Racetrack Table

EXPxxx-TYP22R

\$4,100

28.1 cu.ft. 590.8 lbs.

Consists of:

- (3) qty. EXP-228
- (2) qty. EXP-231



20' Racetrack Table

EXPxxx-TYP20R

\$3,500

23.9 cu.ft. 507.1 lbs.

Consists of:

- (2) qty. EXP-229
- (2) qty. EXP-231

18' Racetrack Table

EXPxxx-TYP18R

\$3,350

19.2 cu.ft. 471.8 lbs.

Consists of:

- (2) qty. EXP-229
- (2) qty. EXP-230

16' Racetrack Table

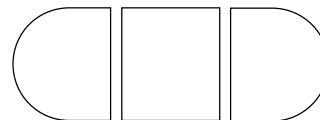
EXPxxx-TYP16R

\$3,150

18.2 cu.ft. 343.9 lbs.

Consists of:

- (2) qty. EXP-228
- (2) qty. EXP-230



14' Racetrack Table

EXPxxx-TYP14R

\$2,500

18.2 cu.ft. 343.9 lbs.

Consists of:

- (1) qty. EXP-228
- (2) qty. EXP-231

12' Racetrack Table

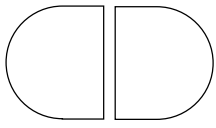
EXPxxx-TYP12R

\$2,350

13.72 cu.ft. 308.6 lbs.

Consists of:

- (1) qty. EXP-228
- (2) qty. EXP-230



10' Racetrack Table
EXPxxx-TYP10R

\$1,905
14.2 cu.ft. 246.9 lbs.
Consists of:
(2) qty. EXP-231
(1) qty. EXP-233

8' Racetrack Table
EXPxxx-TYP8R

\$1,710
9.3 cu.ft. 205.0 lbs.
Consists of:
(2) qty. EXP-230
(1) qty. EXP-232

Finish Key

CHY - Cherry
ESP - Espresso

MAH - Mahogany
SGW - Slate Grey



EXPESP-TYP12R
Racetrack Table with FL1327C-U28 chairs



LWS362448-URB

Finish Key



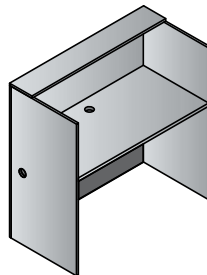
CHY - Cherry



ESP - Espresso

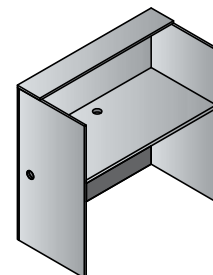


URB - Urban Walnut



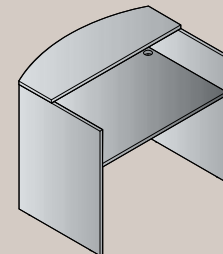
LWS362448-xxx
Laminate Workstation
35.75"x23.5"x48"
CU: 5.38 WT: 94
List Price: \$725

Available in:
ESP Espresso,
URB Urban Walnut



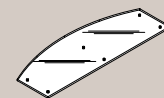
LWS482448-xxx
Laminate Workstation
47.25"x23.75"x48"
CU: 5.67 WT: 111
List Price: \$750

Available in:
CHY Cherry,
ESP Espresso,
URB Urban Walnut



NAP-121-xxx
48" Reception Desk Shell
48"x35.75"/30"x41.5"
CU: 7.4 WT: 163
List Price: \$765

Available in:
ESP Espresso
SGW Slate Grey
WHT White



NAP-126
48"W Glass Top
*Fits NAP121ESP
48"x17.5"x48"
CU: 1.34 WT: 47
List Price: \$445