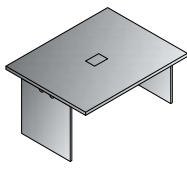
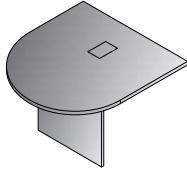


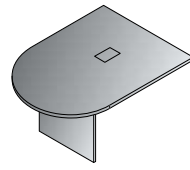
**EXP-228-xxx**  
48"x48"  
Table Component  
47.2"x47.2"x29.1"  
CU:5.04 WT:123  
List Price: **\$850**



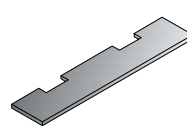
**EXP-229-xxx**  
60"x48"  
Table Component  
59.1"x47.2"x29.1"  
CU:5.39 WT:143  
List Price: **\$950**



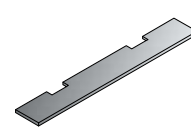
**EXP-230-xxx**  
48"x48" Bullet Top  
Component  
47.2"x47.2"x29.1"  
CU:4.34 WT:93  
List Price: **\$825**



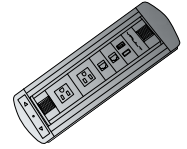
**EXP-231-xxx**  
60"x48" Bullet Top  
Component  
59.1"x47.2"x29.1"  
CU:5.39 WT:110  
List Price: **\$900**



**EXP-232-xxx**  
Stretcher for EXP230  
2 qty.  
55.1"x11.4"x1"  
CU:0.48 WT:20  
List Price: **\$170**



**EXP-233-xxx**  
Stretcher for EXP231  
2 qty.  
78.7"x11.4"x1"  
CU:0.92 WT:26  
List Price: **\$215**



**EXP-POW1**  
Power/Data/  
HDMI Unit  
5.25"x3"x1.25"  
CU:0.4 WT:5.0  
List Price: **\$945**



**EXPCHY-TYP12R**  
Racetrack Table

**EXP-POW1**  
Power Data/HDMI Unit

## Configuration Guide



**30' Racetrack Table**  
**EXPxxx-TYP30R**

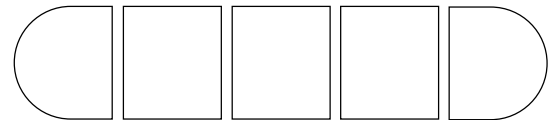
**\$5,600**  
34.5 cu.ft. 793.7 lbs.  
Consists of:  
(4) qty. EXP-229  
(2) qty. EXP-231

**28' Racetrack Table**  
**EXPxxx-TYP28R**

**\$5,400**  
33.8 cu.ft. 754.0 lbs.  
Consists of:  
(2) qty. EXP-228  
(2) qty. EXP-229  
(2) qty. EXP-231

**26' Racetrack Table**  
**EXPxxx-TYP26R**

**\$5,200**  
33.1 cu.ft. 714.3 lbs.  
Consists of:  
(4) qty. EXP-228  
(2) qty. EXP-231



**24' Racetrack Table**  
**EXPxxx-TYP24R**

**\$4,550**  
28.8 cu.ft. 630.5 lbs.  
Consists of:  
(1) qty. EXP-228  
(2) qty. EXP-229  
(2) qty. EXP-231

**22' Racetrack Table**  
**EXPxxx-TYP22R**

**\$4,350**  
28.1 cu.ft. 590.8 lbs.  
Consists of:  
(3) qty. EXP-228  
(2) qty. EXP-231



**20' Racetrack Table**  
**EXPxxx-TYP20R**

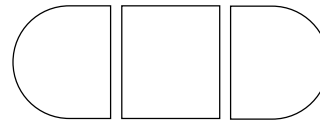
**\$3,700**  
23.9 cu.ft. 507.1 lbs.  
Consists of:  
(2) qty. EXP-229  
(2) qty. EXP-231

**18' Racetrack Table**  
**EXPxxx-TYP18R**

**\$3,550**  
19.2 cu.ft. 471.8 lbs.  
Consists of:  
(2) qty. EXP-229  
(2) qty. EXP-230

**16' Racetrack Table**  
**EXPxxx-TYP16R**

**\$3,350**  
18.2 cu.ft. 343.9 lbs.  
Consists of:  
(2) qty. EXP-228  
(2) qty. EXP-230

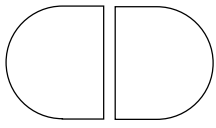


**14' Racetrack Table**  
**EXPxxx-TYP14R**

**\$2,650**  
18.2 cu.ft. 343.9 lbs.  
Consists of:  
(1) qty. EXP-228  
(2) qty. EXP-231

**12' Racetrack Table**  
**EXPxxx-TYP12R**

**\$2,500**  
13.72 cu.ft. 308.6 lbs.  
Consists of:  
(1) qty. EXP-228  
(2) qty. EXP-230



**10' Racetrack Table**  
**EXPxxx-TYP10R**

**\$2,015**  
14.2 cu.ft. 246.9 lbs.  
Consists of:  
(2) qty. EXP-231  
(1) qty. EXP-233

**8' Racetrack Table**  
**EXPxxx-TYP8R**

**\$1,820**  
9.3 cu.ft. 205.0 lbs.  
Consists of:  
(2) qty. EXP-230  
(1) qty. EXP-232

**Finish Key**

**CHY** - Cherry  
**ESP** - Espresso

**MAH** - Mahogany  
**SGW** - Slate Grey



**EXPESP-TYP12R**  
Racetrack Table with FL1327C-U28 chairs



**LWS362448-URB**

**Finish Key**



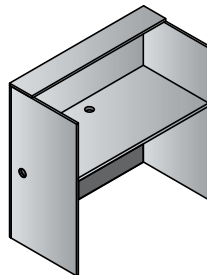
**CHY** - Cherry



**ESP** - Espresso

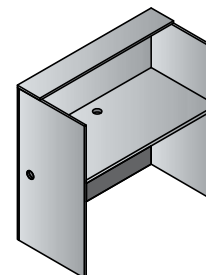


**URB** - Urban Walnut



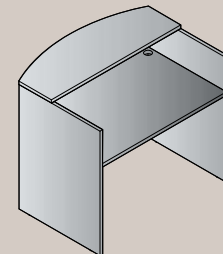
**LWS362448-xxx**  
**Laminate Workstation**  
35.75"x23.5"x48"  
CU: 5.38 WT: 94  
**List Price: \$765**

Available in:  
ESP Espresso,  
URB Urban Walnut



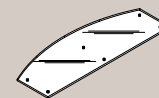
**LWS482448-xxx**  
**Laminate Workstation**  
47.25"x23.75"x48"  
CU: 5.67 WT: 111  
**List Price: \$790**

Available in:  
CHY Cherry,  
ESP Espresso,  
URB Urban Walnut



**NAP-121-xxx**  
**48" Reception Desk Shell**  
48"x35.75"/30"x41.5"  
CU: 7.4 WT: 163  
**List Price: \$805**

Available in:  
ESP Espresso  
SGW Slate Grey  
WHT White



**NAP-126**  
**48"W Glass Top**  
\*Fits NAP121ESP  
48"x17.5"x48"  
CU: 1.34 WT: 47  
**List Price: \$470**